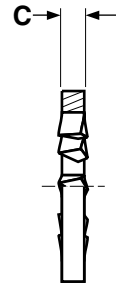
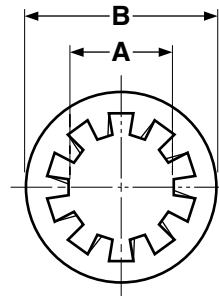


Washers

Tooth Lock Washers - Internal



Nominal Washer Size		A		B		C	
		Inside Diameter		Outside Diameter		Thickness	
		Max	Min	Max	Min	Max	Min
#2	0.086	0.095	0.089	0.200	0.175	0.015	0.010
#3	0.099	0.109	0.102	0.232	0.215	0.019	0.012
#4	0.112	0.123	0.115	0.270	0.245	0.019	0.015
#5	0.125	0.136	0.129	0.280	0.255	0.021	0.017
#6	0.138	0.150	0.141	0.295	0.275	0.021	0.017
#8	0.164	0.176	0.168	0.340	0.325	0.023	0.018
#10	0.190	0.204	0.195	0.381	0.365	0.025	0.020
#12	0.216	0.231	0.221	0.410	0.394	0.025	0.020
1/4	0.250	0.267	0.256	0.478	0.460	0.028	0.023
5/16	0.312	0.332	0.320	0.610	0.594	0.034	0.028
3/8	0.375	0.398	0.384	0.692	0.670	0.040	0.032
7/16	0.438	0.464	0.448	0.789	0.740	0.040	0.032
1/2	0.500	0.530	0.512	0.900	0.867	0.045	0.037
9/16	0.5625	0.596	0.576	0.985	0.957	0.045	0.037
5/8	0.625	0.663	0.640	1.071	1.045	0.050	0.042
3/4	0.750	0.795	0.769	1.245	1.220	0.055	0.047
7/8	0.875	0.927	0.894	1.410	1.364	0.060	0.052
1	1.000	1.060	1.019	1.637	1.590	0.067	0.059

ASME B18.21.1-1994

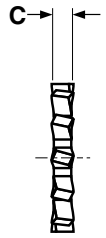
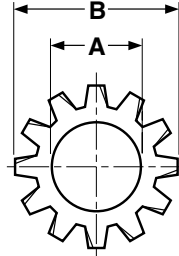
**The value-added source for quality bolts, screws,
nuts, washers and other industrial fasteners.**

3211 West 9th Street, Trainer, PA 19061-5242 TOLL FREE: 1-800-662-7459 LOCAL: 610-485-5700 FAX: 610-485-5877

E-MAIL: sales@coburnmyers.com

Washers

Tooth Lock Washers - External



Nominal Washer Size		A Inside Diameter		B Outside Diameter		C Thickness	
		Max	Min	Max	Min	Max	Min
#2	0.086	0.095	0.086	0.189	0.177	0.013	0.010
#3	0.099	0.109	0.102	0.235	0.220	0.015	0.012
#4	0.112	0.123	0.115	0.260	0.245	0.019	0.014
#5	0.125	0.136	0.129	0.285	0.270	0.019	0.015
#6	0.138	0.150	0.141	0.320	0.305	0.022	0.016
#8	0.164	0.176	0.168	0.381	0.365	0.023	0.018
#10	0.190	0.204	0.195	0.410	0.395	0.025	0.020
#12	0.216	0.231	0.221	0.475	0.460	0.028	0.023
1/4	0.250	0.267	0.256	0.510	0.494	0.028	0.023
5/16	0.312	0.332	0.320	0.610	0.588	0.034	0.028
3/8	0.375	0.398	0.384	0.694	0.670	0.040	0.032
7/16	0.438	0.464	0.448	0.760	0.740	0.040	0.032
1/2	0.500	0.530	0.513	0.900	0.880	0.045	0.037
9/16	0.5625	0.596	0.576	0.985	0.960	0.045	0.037
5/8	0.625	0.663	0.641	1.070	1.045	0.050	0.042
3/4	0.750	0.795	0.768	1.260	1.220	0.055	0.047
7/8	0.875	0.927	0.897	1.410	1.380	0.060	0.052
1	1.000	1.060	1.025	1.620	1.590	0.067	0.059

ASME B18.21.1-1994

**The value-added source for quality bolts, screws,
nuts, washers and other industrial fasteners.**

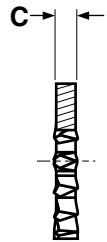
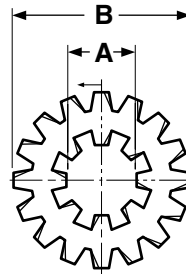
3211 West 9th Street, Trainer, PA 19061-5242 TOLL FREE: 1-800-662-7459 LOCAL: 610-485-5700 FAX: 610-485-5877

E-MAIL: sales@coburnmyers.com



Washers

Tooth Lock Washers -
Internal-External



Nominal Washer Size		A		B		C	
		Inside Diameter		Outside Diameter *		Thickness	
		Max	Min	Max	Min	Max	Min
6	0.138	0.150	0.141	0.510	0.495	0.028	0.023
8	0.164	0.176	0.168	0.610	0.580	0.034	0.028
10	0.190	0.204	0.195	0.610	0.580	0.034	0.028
1/4	0.250	0.267	0.256	0.760	0.725	0.040	0.032
5/16	0.312	0.332	0.320	0.900	0.865	0.040	0.032
3/8	0.375	0.398	0.384	0.985	0.965	0.045	0.037
7/16	0.438	0.464	0.448	1.070	1.045	0.050	0.042
1/2	0.500	0.530	0.512	1.260	1.220	0.055	0.047
5/8	0.625	0.663	0.640	1.410	1.380	0.060	0.052

ASME B18.21.1-1994

*Industry standards allow for washers with larger outside diameter dimensions.

**The value-added source for quality bolts, screws,
nuts, washers and other industrial fasteners.**

3211 West 9th Street, Trainer, PA 19061-5242 TOLL FREE: 1-800-662-7459 LOCAL: 610-485-5700 FAX: 610-485-5877

E-MAIL: sales@coburnmyers.com